



### Application

- To transfer clean water with liquid temperature between 0°C and 40°C
- Applicable in water supply and drainage for factories, mines, municipal facilities as well as field irrigation, etc.

### Features

- New unique design with ergonomic feature
- Portable and compact pump frame
- High quality engine with excellent performance and long service life
- Impeller designed with high efficient hydraulic system
- Low fuel consumption

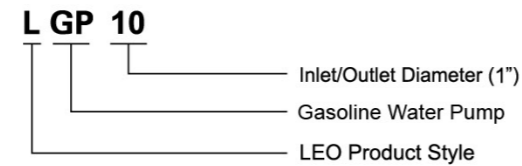
### Pump

- Anti-rust cast iron impeller and diffuser
- Max. Suction: 8 m, Suck 5 m needs 120 s
- Inlet/outlet: 25 mm/38 mm

### Engine

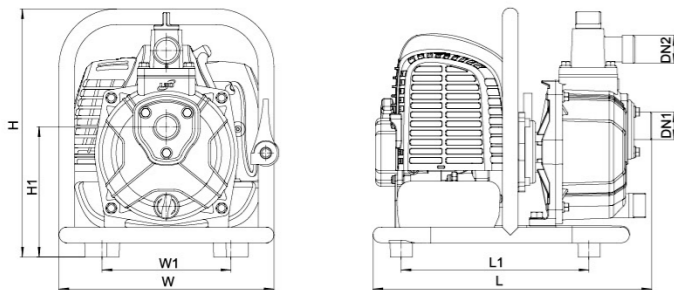
- Single cylinder, 2-stroke, Air-cooled
- Max. power: 1.6 HP
- Rated speed: 7500rpm
- Mixture ratio of fuel: 1:25 (2-stroke engine oil and 90 octane gasoline or higher)

### Identification Codes



### Technical Data

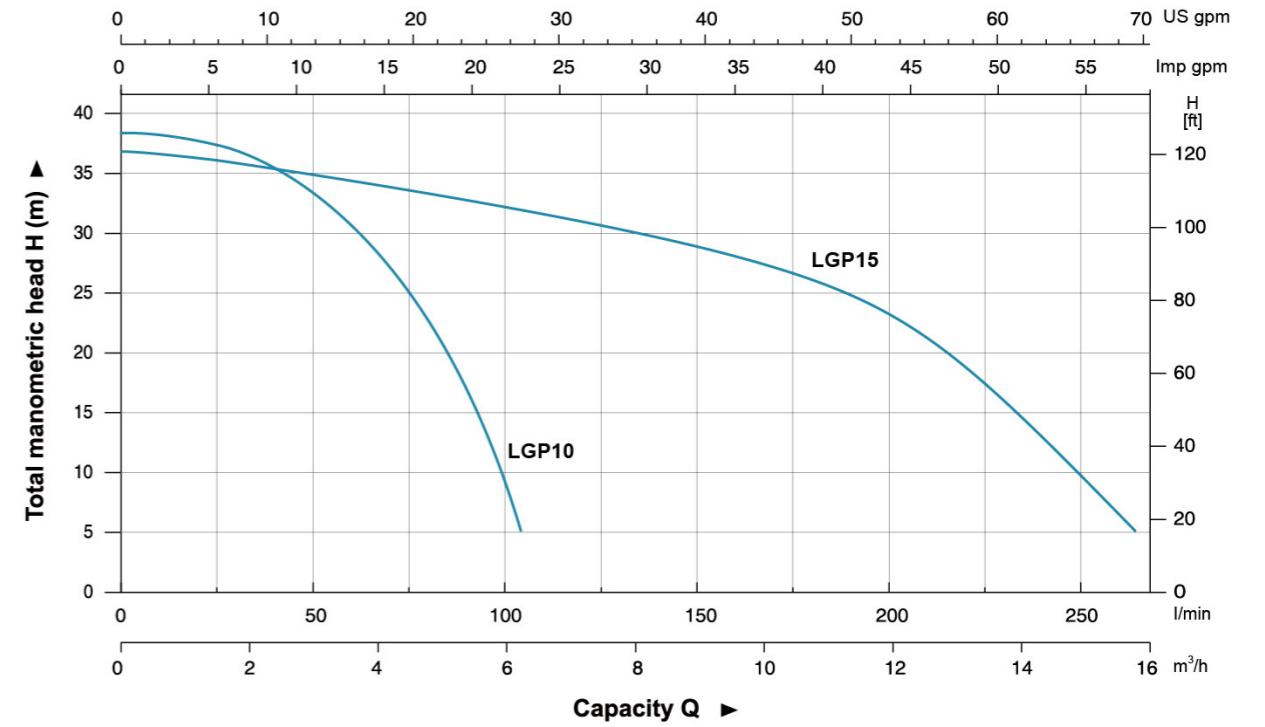
Model	Power HP	Mixed Fuel tank L	Displacement cc	Engine	Q (m³/h)												
					0	2	4	6	8	10	12	14	16	18			
LGP10	1.6	1	42.7	G43	38	35.7	26.9	6	-	-	-	-	-	-	-	-	
LGP15	1.6	1	42.7	G43	37	36.8	34	33	30	27.5	23.5	15	5	-	-	-	



### Dimension

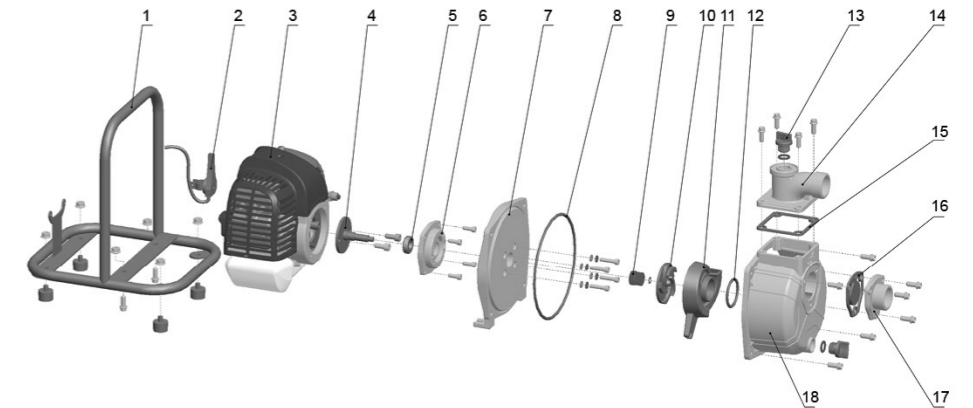
Model	DN1	DN2	L (mm)	W (mm)	H (mm)	L1 (mm)	W1 (mm)	H1 (mm)
LGP10	1"	1"	336	279	300	217.5	155	157
LGP15	1 1/2"	1 1/2"	344	279	345	233	175	180

### Hydraulic Performance Curves



### Materials Table

No.	Part	Material
1	Frame	Steel
2	Throttle trigger	
3	Engine	
4	Crankshaft	
5	Bearing	
6	Seat connection	Aluminum
7	Pump cover	Aluminum
8	O-ring	NBR
9	Mechanical seal	Carbon/Ceramic
10	Impeller	HT200
11	Diffuser	HT200
12	O-ring	NBR
13	Plug	PP
14	Outlet	Aluminum
15	Seal	NBR
16	Non-return valve	NBR
17	Inlet	Aluminum
18	Pump body	Aluminum



### Package Information

Model	GW (Kgs)	L (mm)	W (mm)	H (mm)	Quantity (PCS/20 TEU)
LGP10	6.84	350	290	325	702
LGP15	8.27	355	290	370	681

