



Products Catalogue 2013



Pumps

www.leogroup.cn

浙江利欧股份有限公司
ZHEJIANG LEO CO.,LTD.

LEO 浙江利欧股份有限公司
ZHEJIANG LEO CO.,LTD. (Stock code: 002131)

Center Avenue, Industrial Park-Wenling, Zhejiang, China, 317500
Tel: +86-576-8998 6360 Fax: +86-576-8998 9898 E-mail: export@leogroup.cn www.leogroup.cn



Application

- It can be used to transfer dirty water or other liquids similar to water in physical and chemical properties. It is suitable to be immersed in water for lifting water from the well or the pool, and draining water from the basement.

Pump

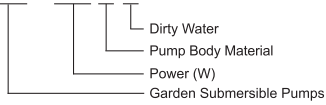
- Plastic pump body
- Max. liquid temperature: +35°C
- Float switch ensures automatic cut-in and cut-out
- Max. immersion depth: 7 m
- Max. diameter of particle: 35 mm

Motor

- Motor with aluminum winding
- Built-in thermal protector
- Insulation class: F
- Protection class: IPX8

Identification Codes

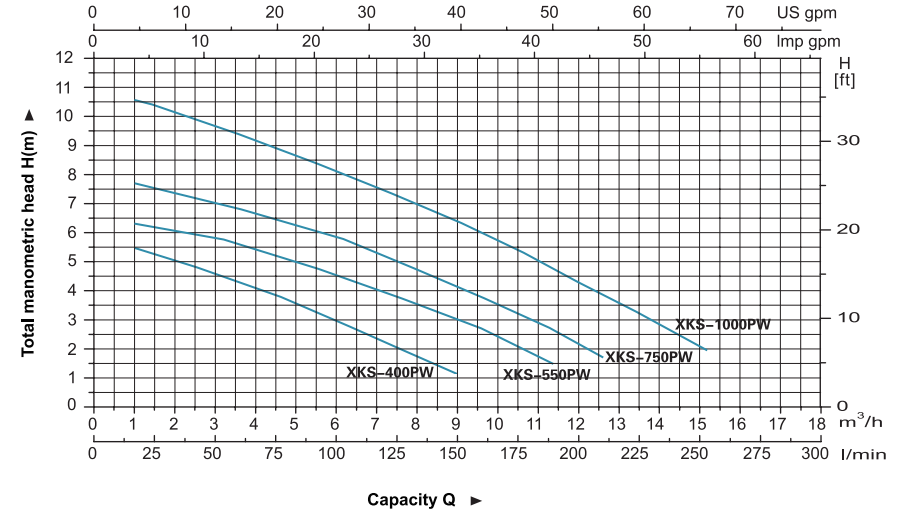
XKS - 400 P W



Technical Data

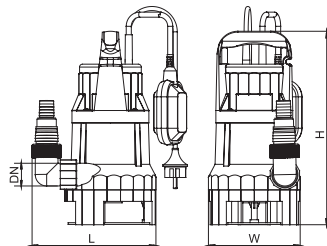
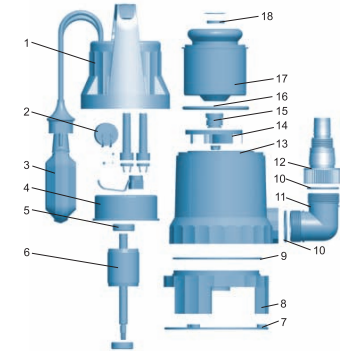
MODEL	POWER		Q (m ³ /h)	H (m)													
	W	HP		1.5	3	4.5	6	7.5	9	10.5	12	13.5					
XKS-400PW	400	0.5	H (m)	50	75	100	125	150	175	200	225	225					
XKS-550PW	550	0.7		6.2	5.7	5.2	4.5	3.8	3	2.2							
XKS-750PW	750	1		7.5	7	6.5	5.8	5	4.1	3.2	2.2						
XKS-1000PW	1000	1.3		10.4	9.7	8.9	8.1	7.3	6.4	5.4	4.3	3.2					

Hydraulic Performance Curve



Materials Table

Pos.	Part	Material
1	Upper cover	PP
2	Capacitor	
3	Float switch	
4	Upper plate	ZL102
5	Ball bearing	
6	Rotor	
7	Base plate	PP
8	Pump base	PP
9	O-ring	NBR
10	O-ring	NBR
11	Connector	PP
12	Connector	PP
13	Pump body	PP
14	Impeller	PA6
15	Mechanical seal	Carbon/ceramic
16	O-ring	NBR
17	Stator	
18	Oil seal	



Dimension

Model	DN	L (mm)	W (mm)	H (mm)
XKS-400PW	32	213	158	332
XKS-550PW	40	213	158	349
XKS-750PW		213	158	349
XKS-1000PW		217	153	376

Package Information

Model	GW (Kgs)	L (mm)	W (mm)	H (mm)	Quantity (PCS/20 TEU)
XKS-400PW	4.8	200	150	300	2632
XKS-550PW	5.2	200	150	300	2632
XKS-750PW	6.2	200	150	300	2632
XKS-1000PW	7.8	205	155	345	2160